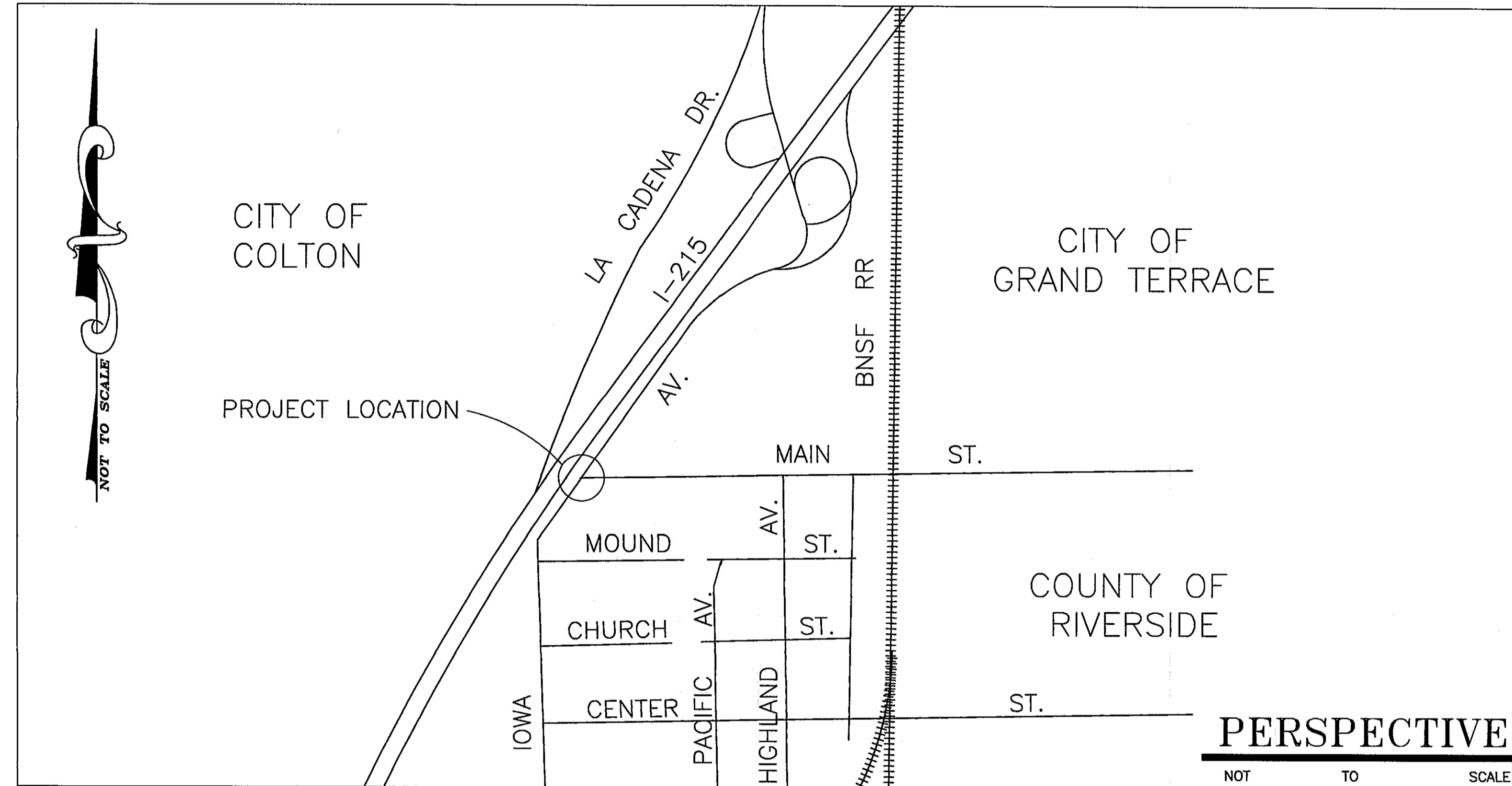


# CITY OF COLTON COUNTY OF SAN BERNARDINO, CALIFORNIA

## TRAFFIC SIGNAL, SIGNING, STRIPING AND STREET IMPROVEMENT IOWA AVENUE AT MAIN STREET

1. ALL WORK SHALL CONFORM TO THE "STANDARD PLANS AND SPECIFICATIONS FOR PUBLIC WORKS CONSTRUCTION", LATEST EDITION, INCLUDING SUPPLEMENTS, AND THE CITY OF COLTON ENGINEERING DEPARTMENT "STANDARD PLANS AND SPECIFICATIONS".
2. APPLICATION FOR INSPECTION TO THE CITY OF COLTON ENGINEERING DEPARTMENT SHALL BE MADE BY THE CONTRACTOR BEFORE THE SERVICES THEREOF WILL BE REQUIRED. PHONE REQUIRED INSPECTION.
3. WORK IN PUBLIC STREETS, ONCE BEGUN, SHALL BE COMPLETED WITHOUT DELAY SO AS TO PROVIDE MINIMUM INCONVENIENCE TO ADJACENT PROPERTY OWNERS AND TO THE TRAVELING PUBLIC.
4. THE CONTRACTOR SHALL TAKE ALL NECESSARY AND PROPER PRECAUTIONS TO PROTECT ADJACENT PROPERTIES FROM ANY AND ALL DAMAGE THAT MAY OCCUR FROM STORM WATER RUNOFF AND/OR DEPOSITION OF DEBRIS RESULTING FROM ANY FLOODING.
5. THE CONTRACTOR SHALL BE RESPONSIBLE FOR THE CLEARING OF THE PROPOSED WORK AREA.
6. IT SHALL BE THE RESPONSIBILITY OF THE CONTRACTOR TO APPLY TO THE CITY ENGINEER'S OFFICE, PERMIT SECTION. PRIOR TO CONSTRUCTION FOR AN ENCROACHMENT PERMIT FOR ALL WORK WITHIN THE PUBLIC RIGHT-OF-WAY.
7. NO TRENCHES MAY BE LEFT OPEN OVERNIGHT UNLESS APPROVED BY THE CITY ENGINEER.
8. IF ANY UTILITIES OR FACILITIES CONFLICT WITH PROPOSED IMPROVEMENTS, ALL WORK SHALL STOP, AND THE CITY ENGINEER SHALL BE NOTIFIED IMMEDIATELY.
9. TRAFFIC CONTROL SHALL BE APPROVED BY THE CITY ENGINEER.
10. THE CONTRACTOR SHALL NOTIFY UNDERGROUND SERVICE ALERT (U.S.A.) AS REQUIRED PRIOR TO THE START OF WORK. UPON EXPOSING ANY UTILITY'S UNDERGROUND FACILITY THE CONTRACTOR SHALL NOTIFY THAT UTILITY IMMEDIATELY.
11. IT SHALL BE THE RESPONSIBILITY OF THE CONTRACTOR TO LOCATE ALL SUBSTRUCTURES WITHIN THE ALIGNMENT OF AND IN THE EVENT OF THE PROPOSED IMPROVEMENTS, SUBSTRUCTURE DAMAGE, THE CONTRACTOR SHALL BEAR THE TOTAL COST OF REPAIR OR REPLACEMENT.
12. THE CONTRACTOR SHALL NOT CONDUCT ANY OPERATIONS OR PERFORM ANY WORK PERTAINING TO THE PROJECT BETWEEN 5:00 P.M. AND 7:00 A.M. ON ANY DAY NOR ON SATURDAY, HOLIDAY AT ANY TIME EXCEPT AS APPROVED BY THE ENGINEER.
13. TREES SHALL BE PROTECTED IN PLACE AND ANY DAMAGE TO EXISTING IMPROVEMENTS SHALL BE REPLACED IN KIND.
14. THE CONTRACTOR IS ADVISED MATERIALS SHALL BECOME HIS PROPERTY AND SHALL BE REMOVED FROM THE JOB-SITE UNLESS INSTRUCTED BY THE CITY ENGINEER TO DO OTHERWISE.
15. THE CONTRACTOR SHALL BE RESPONSIBLE DURING ALL PHASES OF THE WORK TO PROVIDE FOR PUBLIC SAFETY AND CONVENIENCE. THE CONTRACTOR SHALL ESTABLISH ADEQUATE ACCESS TO DRIVEWAYS AT THE END OF EACH WORKING DAY TO THE SATISFACTION OF THE CITY ENGINEER.
16. THE CONTRACTOR SHALL PROVIDE A TRAFFIC CONTROL PLAN FOR THE COMPLETION OF THE PROPOSED IMPROVEMENTS PER THE "WORK AREA TRAFFIC CONTROL HANDBOOK" (W.A.T.C.H.)
17. THE CONTRACTOR SHALL PROVIDE A 72-HOUR NOTIFICATION TO THE AFFECTED PROPERTIES, POLICE DEPARTMENT, AND FIRE DEPARTMENT IN THE EVENT OF A CHANGE IN STREET CLOSURE TO TRAFFIC AND/OR PUBLIC SAFETY VEHICLES, PARKING RESTRICTIONS, AND ON EACH MONDAY MORNING DURING THE CONSTRUCTION PERIOD.
18. ALL PORTLAND CEMENT CONCRETE (P.C.C.) AND ASPHALTIC CONCRETE (A.C.) SHALL BE REMOVED TO A SAWCUT.
19. ANY DISCREPANCIES OR ERRORS FOUND ON THESE PLANS BY THE CONTRACTOR SHALL IMMEDIATELY BE BROUGHT TO THE ATTENTION OF THE PROJECT ENGINEER AND THE CITY ENGINEERING DEPARTMENT. NO WORK SHALL CONTINUE ON THAT PART OF THE CONSTRUCTION AFFECTED BY SUCH DISCREPANCY OR ERROR UNTIL IT HAS BEEN RESOLVED TO THE SATISFACTION OF THE PROJECT ENGINEER AND THE CITY OF COLTON ENGINEERING DEPARTMENT. IF CONTRACTOR DOES PROCEED ON SAID WORK PRIOR TO OBTAINING APPROVAL FROM THE PROJECT ENGINEER AND THE CITY ENGINEERING DEPARTMENT, HE/SHE SHALL BE LIABLE FOR ALL DAMAGES RESULTING THEREFROM.



### N.P.D.E.S REQUIREMENTS

ALL CONSTRUCTION ON OFF-SITE OR ON-SITE IMPROVEMENTS SHALL ADHERE TO N.P.D.E.S. (NATIONAL POLLUTION DISCHARGE ELIMINATION SYSTEM) BEST MANAGEMENT PRACTICES TO PREVENT DELETERIOUS MATERIALS OR POLLUTANTS FROM ENTERING THE CITY OR COUNTY STORM DRAIN SYSTEMS.

THE FOLLOWING SHOULD BE ADHERED TO:

1. HANDLE, STORE AND DISPOSE OF MATERIALS PROPERLY.
2. AVOIDING EXCAVATION AND GRADING ACTIVITIES DURING WET WEATHER.
3. CONSTRUCT DIVERSION DIKES AND DRAINAGE SWALES AROUND WORKING SITES.
4. COVER STOCKPILES AND EXCAVATED SOIL WITH SECURED TARPES OR PLASTIC SHEETING.
5. DEVELOP AND IMPLEMENT EROSION CONTROL PLANS AND PROVIDE A COPY FOR CITY APPROVAL.
6. CHECK AND REPAIR LEAKING EQUIPMENT AWAY FROM CONSTRUCTION SITE.
7. DESIGNATE A LOCATION AWAY FROM STORM DRAINS FOR REFUELING.
8. COVER AND SEAL CATCH BASINS WHENEVER WORKING IN THEIR VICINITY.
9. USE VACUUM WITH ALL CONCRETE SAWING OPERATIONS.

10. NEVER WASH EXCESS MATERIAL FROM AGGREGATE, CONCRETE OR EQUIPMENT ONTO A STREET.
11. CATCH DRIPS FROM PAVER WITH DRIP PANS OR ABSORBENT MATERIAL.
12. CLEAN UP ALL SPILLS USING DRY METHODS.
13. SWEEP ALL GUTTERS AT THE END OF EACH WORKING DAY. GUTTERS SHALL BE KEPT CLEAN AFTER LEAVING CONSTRUCTION SITE.
14. DURING CONSTRUCTION, DUMPSTER(S) SHALL BE SET ON SITE AT ALL TIMES.
15. CALL 911 IN CASE OF A HAZARDOUS SPILL.
16. KEEP A RUNNING LOG OF ALL ACTIVITIES IN CONNECTION WITH THE STORM WATER POLLUTION PREVENTION PLAN (S.W.P.P.)
17. NAME A PERSON, ON SITE RESPONSIBLE FOR COMPLYING WITH S.W.P.P.
18. THE FOLLOWING BMP'S AS OUTLINED IN, BUT NOT LIMITED TO, THE "BEST MANAGEMENT PRACTICE HANDBOOK, CALIFORNIA STORMWATER QUALITY TASK FORCE, SACRAMENTO, CALIFORNIA, 1993", OR THE LATEST REVISED EDITION, MAY APPLY DURING THE CONSTRUCTION OF THIS PROJECT. (ADDITIONAL MEASURES MAY BE REQUIRED IF DEEMED APPROPRIATE BY COUNTY INSPECTORS):

CA001	-DEWATERING OPERATIONS	ESC32	-SLOPE DRAIN
CA002	-PAVING OPERATIONS	ESC40	-OUTLET PROTECTION
CA003	-STRUCTURE CONSTRUCTION AND PAINTING	ESC41	-CHECK DAMS
CA010	-MATERIAL DELIVERY AND STORAGE	ESC42	-SLOPE ROUGHENING/TERRACING
CA011	-MATERIAL USE	ESC50	-SILT FENCE
CA012	-SPILL PREVENTION AND CONTROL	ESC51	-STRAW BALE BARRIERS
CA020	-SOLID WASTE MANAGEMENT	ESC52	-SAND BAG BARRIER
CA021	-HAZARDOUS WASTE MANAGEMENT	ESC53	-BRUSH OR ROCK FILTER
CA022	-CONTAMINATED SOIL MANAGEMENT	ESC54	-STORM DRAIN INLET PROTECTION
CA023	-CONCRETE WASTE MANAGEMENT	ESC55	-SEDIMENT TRAP
CA030	-VEHICLE AND EQUIPMENT CLEANING	ESC56	-SEDIMENT BASIN
CA031	-VEHICLE AND EQUIPMENT FUELING		
CA032	-VEHICLE AND EQUIPMENT MAINTENANCE		
CA040	-EMPLOYEE/SUBCONTRACTOR TRAINING		
ESC01	-SCHEDULING		
ESC02	-PRESERVATION OF EXISTING VEGETATION		
ESC10	-SEEDING AND PLANTING		
ESC11	-MULCHING		
ESC20	-GEOTEXTILES AND MATS		
ESC21	-DUST CONTROLS		
ESC23	-CONSTRUCTION ROAD STABILIZATION		
ESC24	-STABILIZED CONSTRUCTION ENTRANCE		
ESC30	-EARTH DIKE		
ESC31	-TEMPORARY DRAINS AND SWALES		

Underground Service Alert  
of Southern California  
  
CALL BEFORE YOU DIG  
CALL: TOLL FREE  
1-800-227-2600  
Two Working Days Before You Dig



**LIN Consulting, Inc.**  
Traffic, Civil, and Electrical Consulting Engineers  
© 2005 LIN CONSULTING, INC.  
21660 EAST COPLEY DRIVE, SUITE 270  
DIAMOND BAR, CA 91765-4173, (909) 396-6850

APPROVED: CITY OF GRAND TERRACE

BY: \_\_\_\_\_ DATE: \_\_\_\_\_

COUNTY OF RIVERSIDE  
TRANSPORTATION DEPARTMENT APPROVED BY

DEPUTY DIRECTOR OF TRANSPORTATION DATE

RECOMMENDED DATE

**BENCHMARK**

CITY OF COLTON STANDARD 2 INCH BRASS 1000 SET IN NORTHWEST CORNER OF A CONCRETE DRIVE LEADING TO SPACE BUS OF THE LAKE CADENA TRAVEL PARK ON THE SOUTH SIDE OF STREET, 1.0 FOOT SOUTH OF CONCRETE GUTTER, 1.0 FOOT NORTH OF A FIRE HYDRANT, APPROXIMATELY 300 FEET EAST OF THE INTERSECTION OF THE STREET RUNNING NORTH ACROSS FLOOD CONTROL CHANNEL AND EAST OF HIGH VOLTAGE POWER STATION. ELEV. 670.238.

**CITY OF COLTON**  
PUBLIC SERVICES DEPARTMENT

CITY ENGINEER

NAME: AMER JAKHER  
R.C.E. 50932

EXPIRES 9-30-05

APPROVED: \_\_\_\_\_ DATE: \_\_\_\_\_

PLAN NO. 1217-1

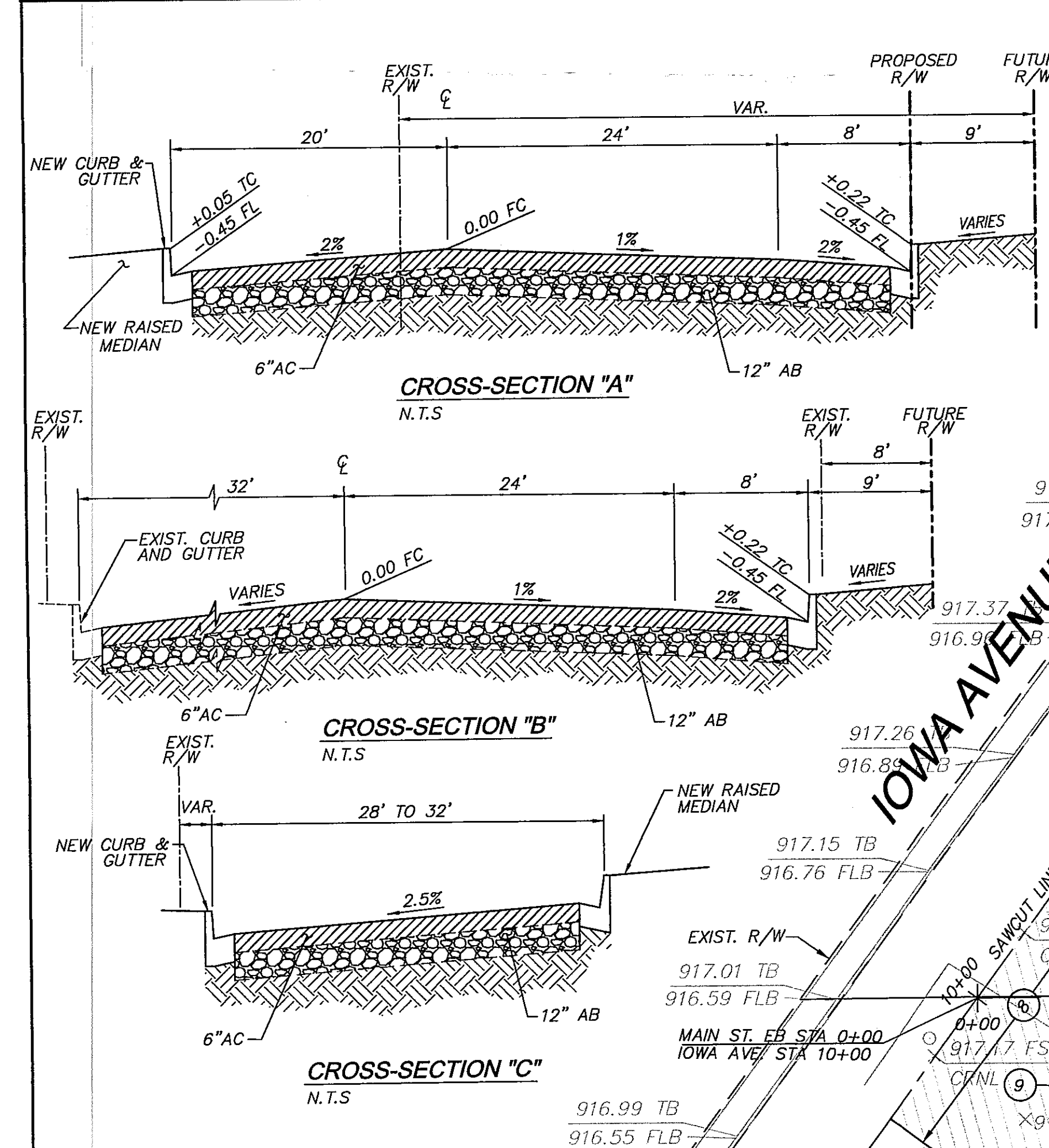
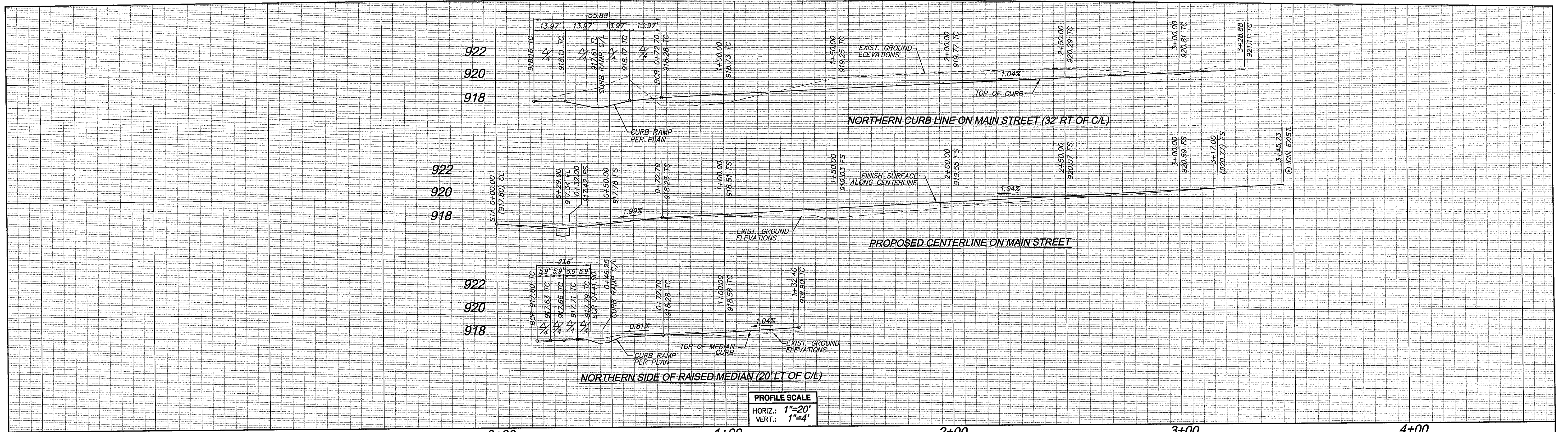
REVISIONS	DATE	APPR.

INTERSECTION IMPROVEMENT PLAN

ADDRESS: IOWA AVENUE AT MAIN STREET

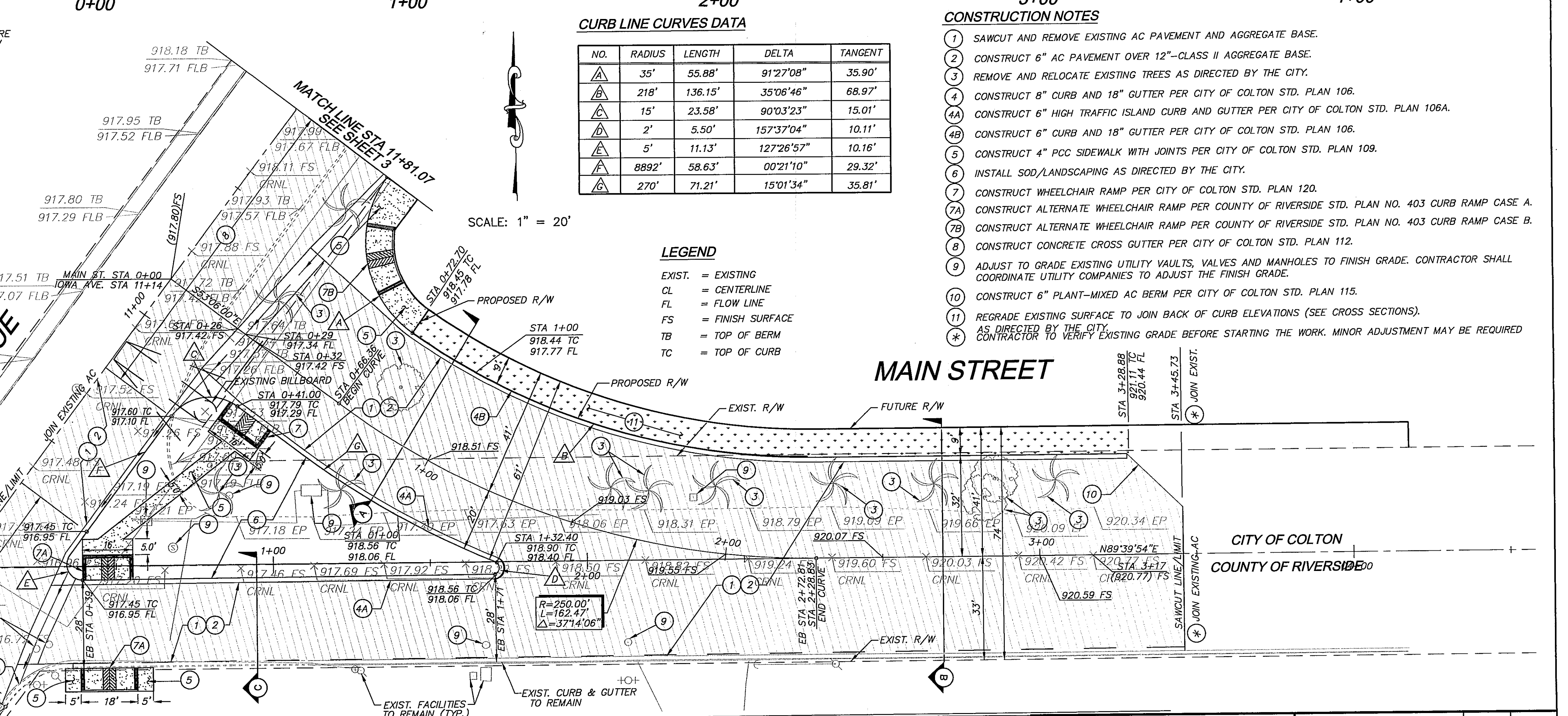
SHEET 1 of 5

1/24/06  
Not an official  
Submission (A)



**BASIS OF BEARING**  
 CENTERLINE OF IOWA AVENUE BETWEEN STATION 10+85.88 AND 21+78.43  
 CALTRANS MAPS 428541 AND 435552 BEING NORTH 36°54'00" EAST.

**BENCH MARK**  
 CITY OF COLTON STANDARD 2 INCH BRASS DISC SET IN NORTHWEST CORNER OF A CONCRETE DRIVE LEADING TO SPACE #95 OF THE LAKE CADENA TRAILER PARK ON THE SOUTH SIDE OF STREET, 1.0 FOOT SOUTH OF CONCRETE GUTTER, 1.0 FOOT NORTH OF A FIRE HYDRANT, APPROXIMATELY 300 FEET EAST OF THE INTERSECTION OF THE STREET RUNNING NORTH ACROSS FLOOD CONTROL CHANNEL AND EAST OF HIGH VOLTAGE POWER STATION. ELEV. 870.238.



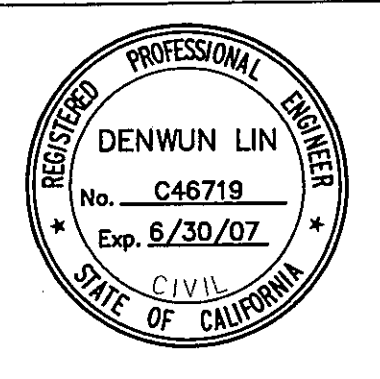
**CURB LINE CURVES DATA**

NO.	RADIUS	LENGTH	DELTA	TANGENT
1	35'	55.88'	91°27'08"	35.90'
2	218'	136.15'	35°06'46"	68.97'
3	15'	23.58'	90°03'23"	15.01'
4	2'	5.50'	157°37'04"	10.11'
5	5'	11.13'	127°26'57"	10.16'
6	8892'	58.63'	00°21'10"	29.32'
7	270'	71.21'	15°01'34"	35.81'

- CONSTRUCTION NOTES**
- SAWCUT AND REMOVE EXISTING AC PAVEMENT AND AGGREGATE BASE.
  - CONSTRUCT 6" AC PAVEMENT OVER 12"-CLASS II AGGREGATE BASE.
  - REMOVE AND RELOCATE EXISTING TREES AS DIRECTED BY THE CITY.
  - CONSTRUCT 8" CURB AND 18" GUTTER PER CITY OF COLTON STD. PLAN 106.
  - CONSTRUCT 6" HIGH TRAFFIC ISLAND CURB AND GUTTER PER CITY OF COLTON STD. PLAN 106A.
  - CONSTRUCT 6" CURB AND 18" GUTTER PER CITY OF COLTON STD. PLAN 106.
  - CONSTRUCT 4" PCC SIDEWALK WITH JOINTS PER CITY OF COLTON STD. PLAN 109.
  - INSTALL SOD/LANDSCAPING AS DIRECTED BY THE CITY.
  - CONSTRUCT WHEELCHAIR RAMP PER CITY OF COLTON STD. PLAN 120.
  - CONSTRUCT ALTERNATE WHEELCHAIR RAMP PER COUNTY OF RIVERSIDE STD. PLAN NO. 403 CURB RAMP CASE A.
  - CONSTRUCT ALTERNATE WHEELCHAIR RAMP PER COUNTY OF RIVERSIDE STD. PLAN NO. 403 CURB RAMP CASE B.
  - CONSTRUCT CONCRETE CROSS GUTTER PER CITY OF COLTON STD. PLAN 112.
  - ADJUST TO GRADE EXISTING UTILITY VAULTS, VALVES AND MANHOLES TO FINISH GRADE. CONTRACTOR SHALL COORDINATE UTILITY COMPANIES TO ADJUST THE FINISH GRADE.
  - CONSTRUCT 6" PLANT-MIXED AC BERM PER CITY OF COLTON STD. PLAN 115.
  - REGRADE EXISTING SURFACE TO JOIN BACK OF CURB ELEVATIONS (SEE CROSS SECTIONS).
  - AS DIRECTED BY THE CITY.
  - CONTRACTOR TO VERIFY EXISTING GRADE BEFORE STARTING THE WORK. MINOR ADJUSTMENT MAY BE REQUIRED.

**LEGEND**

EXIST. = EXISTING  
 CL = CENTERLINE  
 FL = FLOW LINE  
 FS = FINISH SURFACE  
 TB = TOP OF BERM  
 TC = TOP OF CURB



**LIN Consulting, Inc.**  
 Traffic, Civil, and Electrical Consulting Engineers  
 © 2005 LIN CONSULTING, INC.  
 21660 EAST COPLEY DRIVE, SUITE 270  
 DIAMOND BAR, CA 91765-4173, (909) 396-6850

**CITY OF COLTON PUBLIC WORKS**

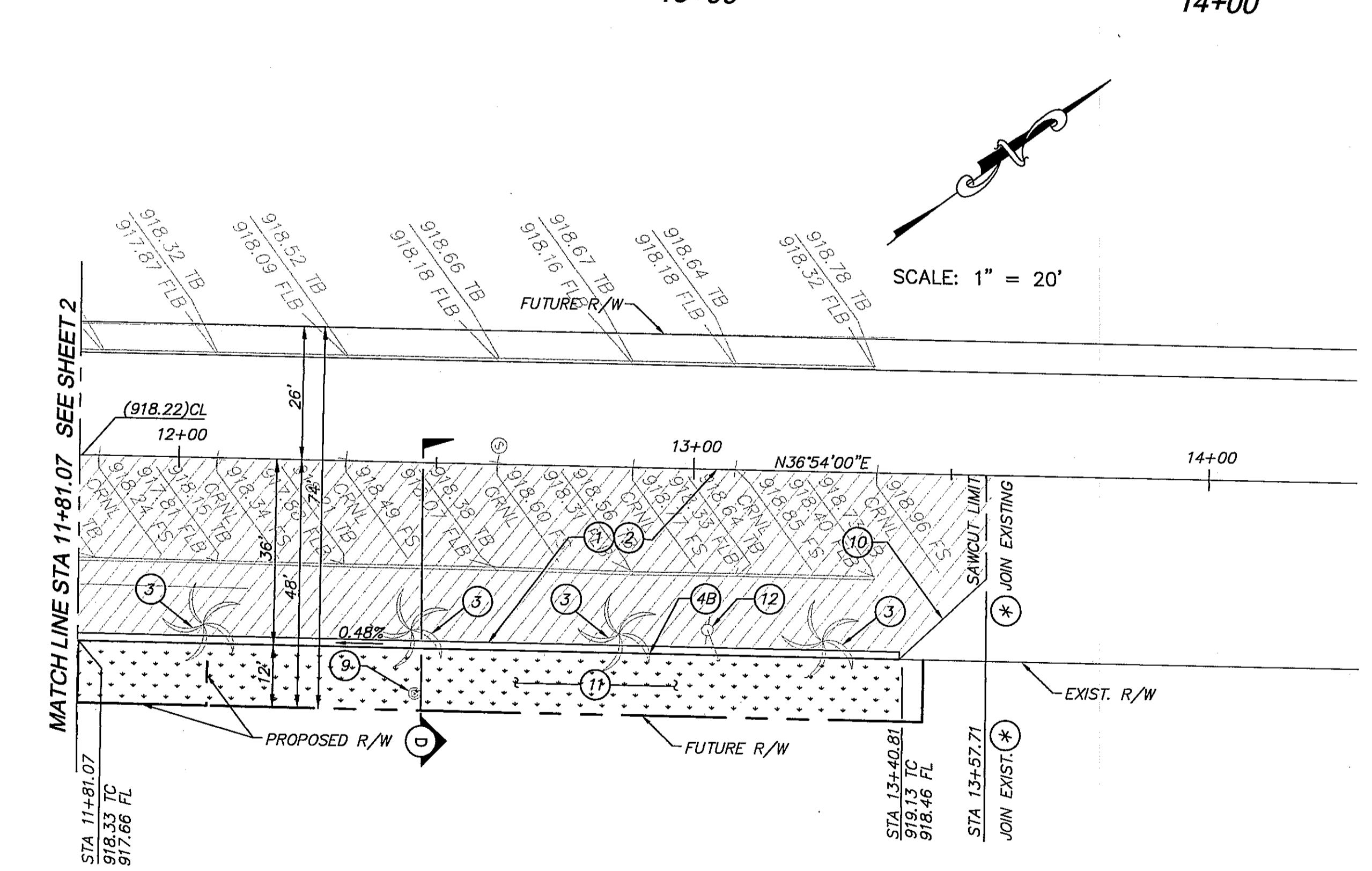
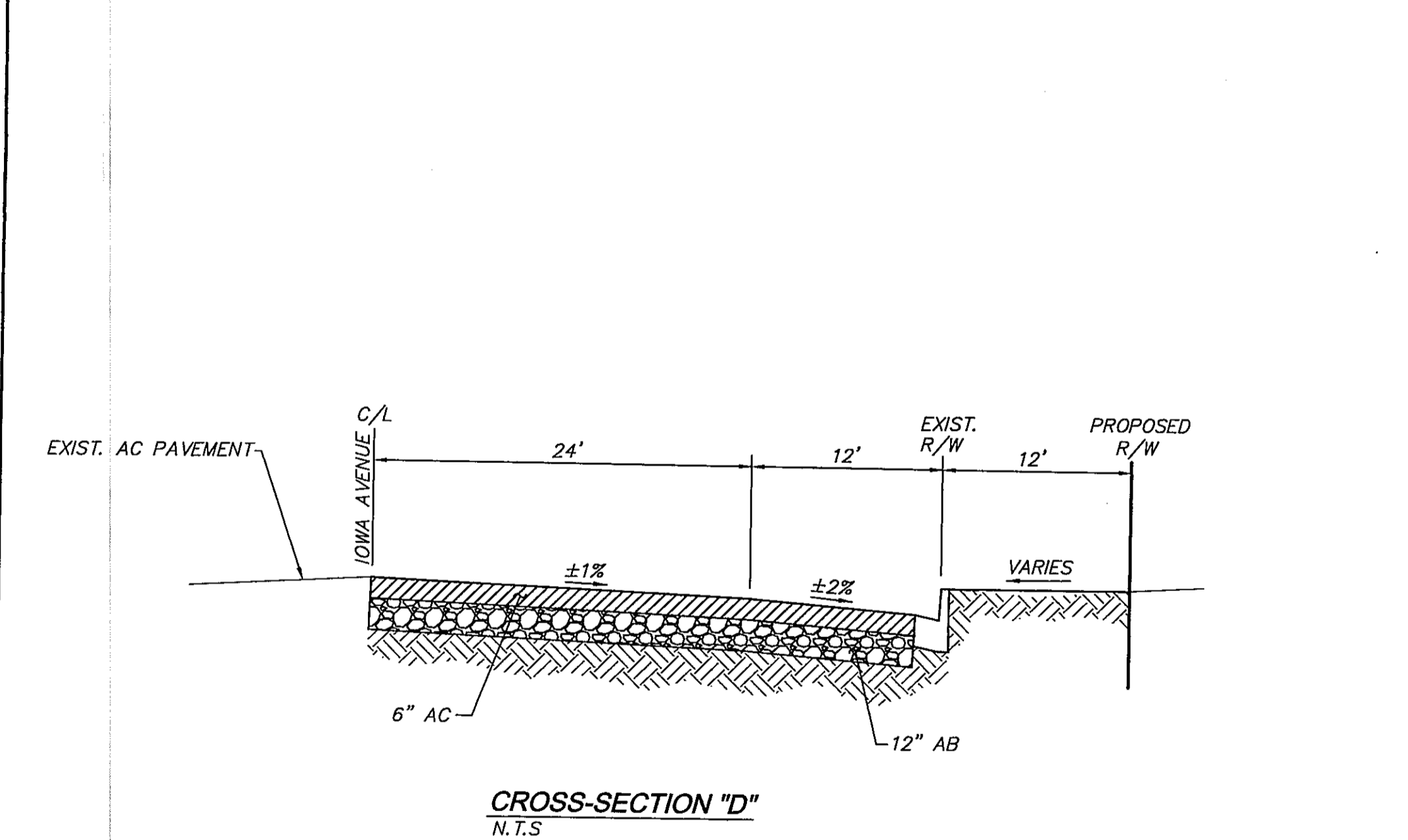
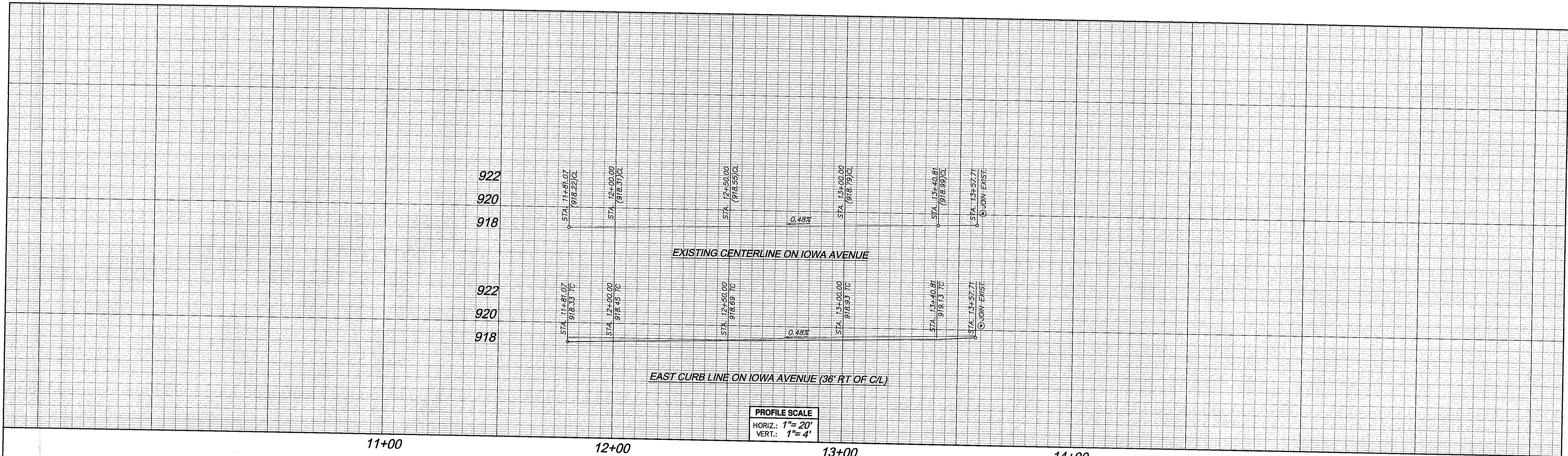
**STREET IMPROVEMENT MAIN STREET**

PLAN NO. 1217-1 SHEET 2 OF 5

REVISIONS		DATE

SCALE: HORIZ.	DRAWN	DESIGNED
VERT.	CHECKED	TRACED
APPROVED		F.B.
CITY ENGINEER, R.C.E.		DATE

Underground Service Alert of Southern California  
 CALL BEFORE YOU DIG  
 CALL: TOLL FREE 1-800-227-2600  
 Two Working Days Before You Dig

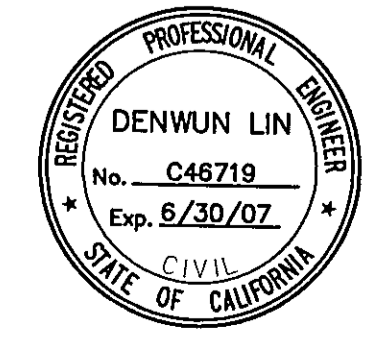


- CONSTRUCTION NOTES**  
(THIS SHEET ONLY)
- 1 SAWCUT AND REMOVE EXISTING AC PAVEMENT AND AGGREGATE BASE.
  - 2 CONSTRUCT 6" AC PAVEMENT OVER 12"-CLASS II AGGREGATE BASE.
  - 3 REMOVE AND RELOCATE EXISTING PALM TREES AS DIRECTED BY THE CITY INSPECTOR.
  - 4B CONSTRUCT 8" CURB AND 18" GUTTER PER CITY OF COLTON STD. PLAN 106.
  - 9 ADJUST TO GRADE EXISTING UTILITY VAULTS, VALVES AND MANHOLES TO FINISH GRADE.
  - 10 CONSTRUCT 6" PLANT-MIXED AC BERM PER CITY OF COLTON STD. PLAN 115.
  - 11 REGRADE EXISTING SURFACE TO JOIN BACK OF CURB ELEVATIONS.
  - 12 REMOVE AND RELOCATE EXISTING ELECTRICAL POLE AND WIRES AS DIRECTED BY THE CITY.
  - \* CONTRACTOR TO VERIFY EXISTING GRADE BEFORE STARTING THE WORK. MINOR ADJUSTMENT MAY BE REQUIRED AS DIRECTED BY THE CITY.

- LEGEND**
- EXIST. = EXISTING
  - CL = CENTERLINE
  - FL = FLOW LINE
  - FS = FINISH SURFACE
  - TB = TOP OF BERM
  - TC = TOP OF CURB

**BENCH MARK**  
CITY OF COLTON STANDARD 2 INCH BRASS DISC SET IN NORTHWEST CORNER OF A CONCRETE DRIVE LEADING TO SPACE #95 OF THE LAKE CADENA TRAILER PARK ON THE SOUTH SIDE OF STREET, 1.0 FOOT SOUTH OF CONCRETE GUTTER, 1.0 FOOT NORTH OF A FIRE HYDRANT, APPROXIMATELY 300 FEET EAST OF THE INTERSECTION OF THE STREET RUNNING NORTH ACROSS FLOOD CONTROL CHANNEL AND EAST OF HIGH VOLTAGE POWER STATION. ELEV. 870.238.

**BASIS OF BEARING**  
CENTERLINE OF IOWA AVENUE BETWEEN STATION 10+85.88 AND 21+78.43 CALTRANS MAPS 428541 AND 435552 BEING NORTH 36°54'00" EAST.



**LIN Consulting, Inc.**  
Traffic, Civil, and Electrical Consulting Engineers  
© 2005 LIN CONSULTING, INC.  
21660 EAST COPLEY DRIVE, SUITE 270  
DIAMOND BAR, CA 91765-4173, (909) 396-6850

CITY OF COLTON  
PUBLIC WORKS

**STREET IMPROVEMENT**  
IOWA AVENUE

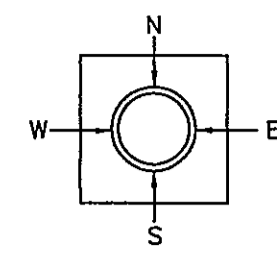
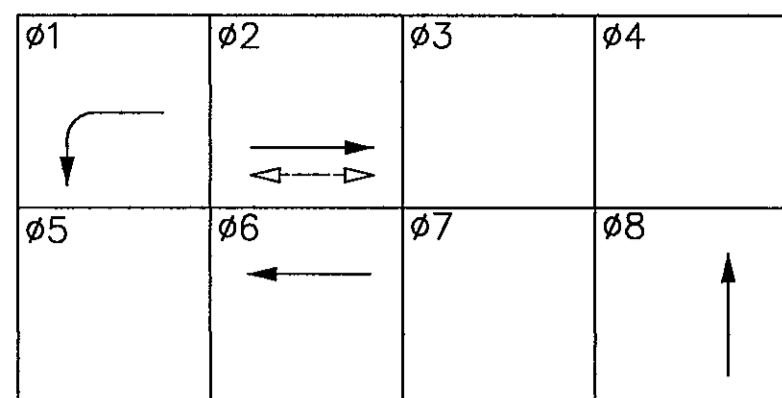
PLAN NO. 1217-1 SHEET 3 OF 5

REVISIONS		DATE
SCALE: HORIZ.	DRAWN	DESIGNED
SCALE: VERT.	CHECKED	TRACED
APPROVED		F.B.
CITY ENGINEER, R.C.E.		DATE

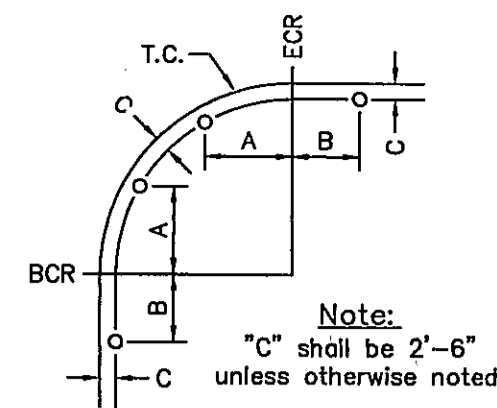




PHASE DIAGRAM



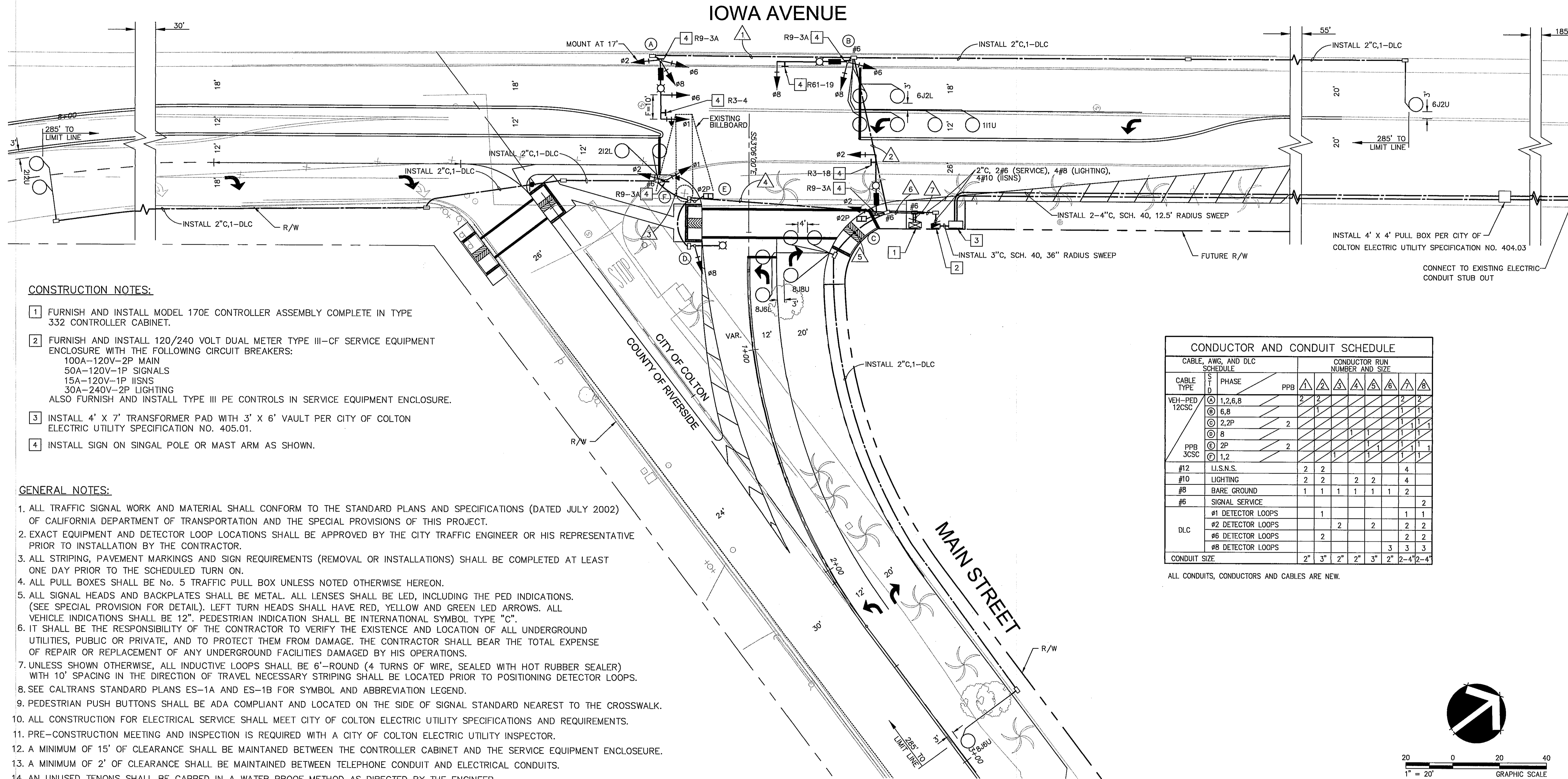
QUADRANT  
PPB LOCATION (TOP VIEW)



POLE LOCATION DETAIL  
(No Scale)

POLE SCHEDULE																	
POLE DATA		SIGNAL		LUMINAIRE		VEH SIG MTG		PED SIG		PPB		POLE LOC.		I.I.S.N.S. (DBL FACE)	NOTES		
No.	TYPE	Ht.	M.A.	M.A.	HPS	MAST	POLE	MTG	TYPE	Ø	QUAD	A	B	C			
A	19-4-129	30'	25'	12'	250W	MAS MAS	SV-1-T SV-2-T	-	-	-	-	-	-	-	See Plan 2.5'	Main St	-
B	19-4-129	30'	30'	12'	250W	MAS MAS	SV-1-T SV-2-T	-	-	-	-	-	-	-	See Plan 2.5'	Iowa St	-
C	19-4-129	30'	25'	12'	250W	MAS	SV-1-T	SP-1-T	B	2	E	13'	-	2.5'	-	Main St	-
D	TYPE 15	30'	-	12'	250W	-	SV-1-T	-	-	-	-	-	-	15'	2.5'	-	-
E	1-A	7'	-	-	-	-	-	TP-1-T	B	2	E	4'	-	2.5'	-	-	-
F	1-A	10'	-	-	-	-	TV-2-T	-	-	-	-	-	-	5'	2.5'	-	-

ALL EQUIPMENT ARE NEW.



CONSTRUCTION NOTES:

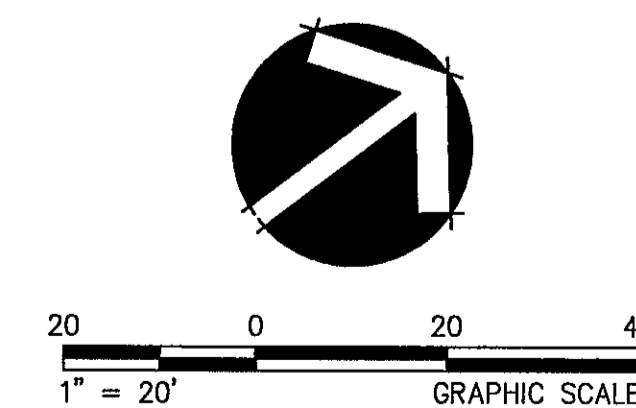
- FURNISH AND INSTALL MODEL 170E CONTROLLER ASSEMBLY COMPLETE IN TYPE 332 CONTROLLER CABINET.
- FURNISH AND INSTALL 120/240 VOLT DUAL METER TYPE III-CF SERVICE EQUIPMENT ENCLOSURE WITH THE FOLLOWING CIRCUIT BREAKERS:  
100A-120V-2P MAIN  
50A-120V-1P SIGNALS  
15A-120V-1P IISNS  
30A-240V-2P LIGHTING  
ALSO FURNISH AND INSTALL TYPE III PE CONTROLS IN SERVICE EQUIPMENT ENCLOSURE.
- INSTALL 4' X 7' TRANSFORMER PAD WITH 3' X 6' VAULT PER CITY OF COLTON ELECTRIC UTILITY SPECIFICATION NO. 405.01.
- INSTALL SIGN ON SINGAL POLE OR MAST ARM AS SHOWN.

GENERAL NOTES:

- ALL TRAFFIC SIGNAL WORK AND MATERIAL SHALL CONFORM TO THE STANDARD PLANS AND SPECIFICATIONS (DATED JULY 2002) OF CALIFORNIA DEPARTMENT OF TRANSPORTATION AND THE SPECIAL PROVISIONS OF THIS PROJECT.
- EXACT EQUIPMENT AND DETECTOR LOOP LOCATIONS SHALL BE APPROVED BY THE CITY TRAFFIC ENGINEER OR HIS REPRESENTATIVE PRIOR TO INSTALLATION BY THE CONTRACTOR.
- ALL STRIPING, PAVEMENT MARKINGS AND SIGN REQUIREMENTS (REMOVAL OR INSTALLATIONS) SHALL BE COMPLETED AT LEAST ONE DAY PRIOR TO THE SCHEDULED TURN ON.
- ALL PULL BOXES SHALL BE No. 5 TRAFFIC PULL BOX UNLESS NOTED OTHERWISE HEREON.
- ALL SIGNAL HEADS AND BACKPLATES SHALL BE METAL. ALL LENSES SHALL BE LED, INCLUDING THE PED INDICATIONS. (SEE SPECIAL PROVISION FOR DETAIL). LEFT TURN HEADS SHALL HAVE RED, YELLOW AND GREEN LED ARROWS. ALL VEHICLE INDICATIONS SHALL BE 12". PEDESTRIAN INDICATION SHALL BE INTERNATIONAL SYMBOL TYPE "C".
- IT SHALL BE THE RESPONSIBILITY OF THE CONTRACTOR TO VERIFY THE EXISTENCE AND LOCATION OF ALL UNDERGROUND UTILITIES, PUBLIC OR PRIVATE, AND TO PROTECT THEM FROM DAMAGE. THE CONTRACTOR SHALL BEAR THE TOTAL EXPENSE OF REPAIR OR REPLACEMENT OF ANY UNDERGROUND FACILITIES DAMAGED BY HIS OPERATIONS.
- UNLESS SHOWN OTHERWISE, ALL INDUCTIVE LOOPS SHALL BE 6'-ROUND (4 TURNS OF WIRE, SEALED WITH HOT RUBBER SEALER) WITH 10" SPACING IN THE DIRECTION OF TRAVEL NECESSARY STRIPING SHALL BE LOCATED PRIOR TO POSITIONING DETECTOR LOOPS.
- SEE CALTRANS STANDARD PLANS ES-1A AND ES-1B FOR SYMBOL AND ABBREVIATION LEGEND.
- PEDESTRIAN PUSH BUTTONS SHALL BE ADA COMPLIANT AND LOCATED ON THE SIDE OF SIGNAL STANDARD NEAREST TO THE CROSSWALK.
- ALL CONSTRUCTION FOR ELECTRICAL SERVICE SHALL MEET CITY OF COLTON ELECTRIC UTILITY SPECIFICATIONS AND REQUIREMENTS.
- PRE-CONSTRUCTION MEETING AND INSPECTION IS REQUIRED WITH A CITY OF COLTON ELECTRIC UTILITY INSPECTOR.
- A MINIMUM OF 15' OF CLEARANCE SHALL BE MAINTAINED BETWEEN THE CONTROLLER CABINET AND THE SERVICE EQUIPMENT ENCLOSURE.
- A MINIMUM OF 2' OF CLEARANCE SHALL BE MAINTAINED BETWEEN TELEPHONE CONDUIT AND ELECTRICAL CONDUITS.
- AN UNUSED TENONS SHALL BE CAPPED IN A WATER PROOF METHOD AS DIRECTED BY THE ENGINEER.
- PUBLIC RIGHT OF WAY SHALL BE KEPT CLEAN OF DEBRIS, WITH DUST AND OTHER NUISANCES BEING CONTROLLED AT ALL TIMES. THE CONTRACTOR SHALL BE RESPONSIBLE FOR ANY CLEANUP ON PUBLIC RIGHT-OF-WAY AFFECTED BY THIS CONSTRUCTION. METHOD OF STREET STREET CLEANING SHALL BE DRY SWEEPING OF ALL PAVED AREAS. THERE SHALL BE NO STOCKPILING OF CONSTRUCTION MATERIALS WITHIN THE COUNTY & CITY RIGHT-OF-WAY WITHOUT THE PERMISSION.

CONDUCTOR AND CONDUIT SCHEDULE																	
CABLE, AWG, AND DLC SCHEDULE		CONDUCTOR RUN NUMBER AND SIZE															
CABLE TYPE	PHASE	PPB	1	2	3	4	5	6	7								
VEH-PED 12CSC	1,2,6,8	2	2						2								
	6,8		1						1								
	2,2P	2							1								
	8								1								
PPB 3CSC	2P	2							1								
	1,2		1						1								
#12	I.I.S.N.S.	2	2						4								
#10	LIGHTING	2	2		2	2			4								
#8	BARE GROUND	1	1	1	1	1	1	1	2								
#6	SIGNAL SERVICE								2								
										#1 DETECTOR LOOPS	1						1
										#2 DETECTOR LOOPS		2					2
										#6 DETECTOR LOOPS		2					2
DLC	#8 DETECTOR LOOPS								3								
										3	3	3					
CONDUIT SIZE			2"	3"	2"	2"	3"	2"	2-4"	2-4"							

ALL CONDUITS, CONDUCTORS AND CABLES ARE NEW.



**LIN Consulting, Inc.**  
Traffic, Civil, and Electrical Consulting Engineers  
© 2005 LIN CONSULTING, INC.  
21660 EAST COPLEY DRIVE, SUITE 270  
DIAMOND BAR, CA 91765-4173, (909) 396-6850

CITY OF COLTON PUBLIC WORKS		TRAFFIC SIGNAL IOWA AVENUE AT MAIN STREET		PLAN NO. 1217-1		SHEET 5 OF 5	
REVISIONS		DATE		DESIGNED		RW	
SCALE: HORIZ.	DRAWN	RW	DATE	DESIGNED	RW		
VERT.	CHECKED	WCS	TRACED	F.B.			
APPROVED		DATE					
CITY ENGINEER, R.C.E.							