

CITY OF COLTON TREASURER'S REPORT
FOR NOVEMBER 2012

The Treasurer's report reflects all funds held by the City. The Investments reflected in this report are in compliance with the City's investment policy adopted in January 2012. The investment portfolio as well as budgeted income is expected to meet projected cash flow requirements for the next six months.

A handwritten signature in black ink, appearing to read 'Aurelio De La Torre', written in a cursive style.

Aurelio De La Torre, Treasurer
January 8, 2013

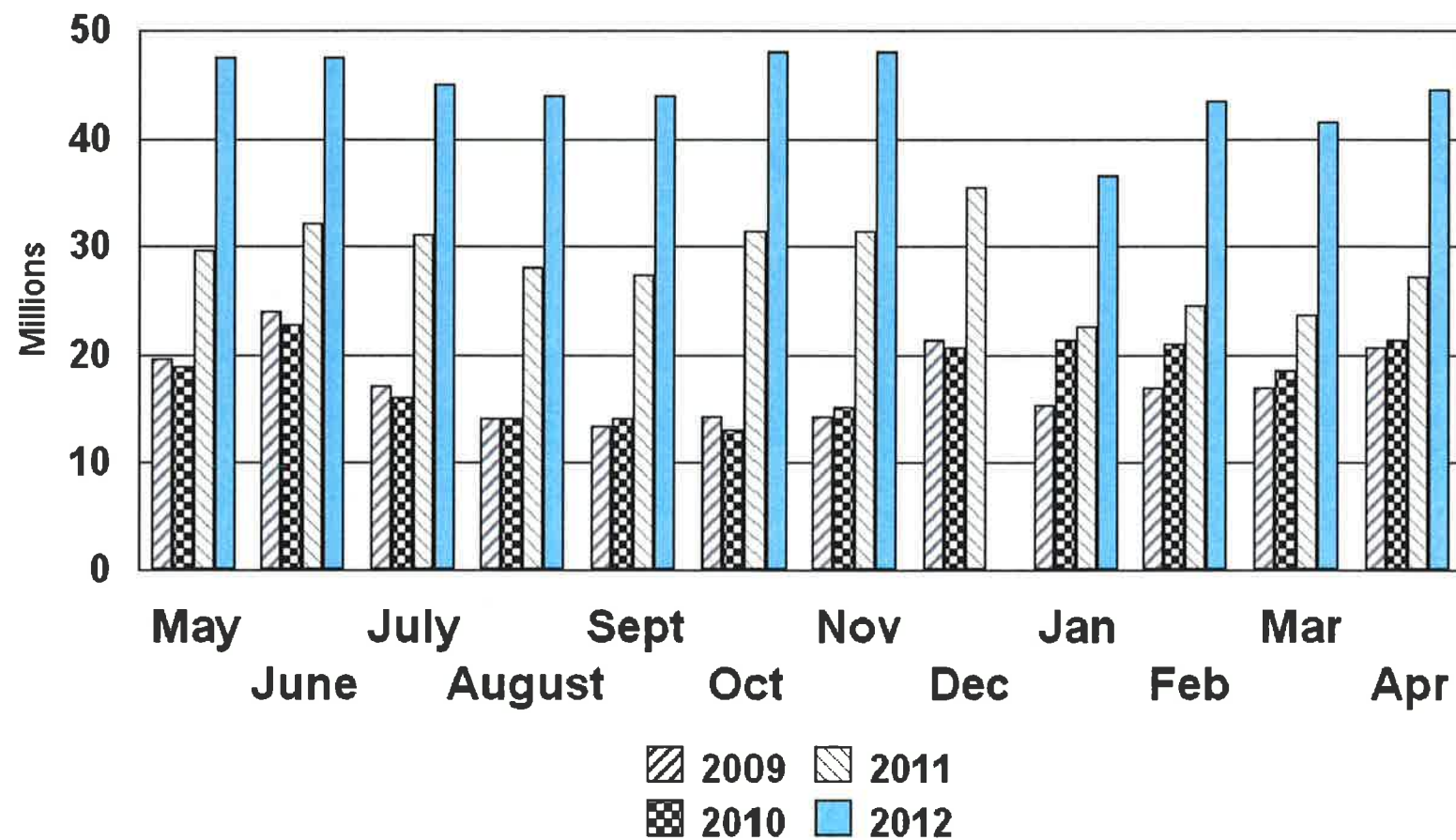
**CITY OF COLTON
WEIGHTED AVERAGE YIELD ON INVESTMENT PORTFOLIO**

MONTH	Yield
June-2011	0.45%
August-2011	0.41%
September-2011	0.38%
October-2011	0.39%
November-2011	0.40%
December-2011	0.38%
January-2012	0.39%
February-2012	0.39%
March-2012	0.38%
April-2012	0.37%
May-2012	0.36%
June-2012	0.36%
July-2012	0.36%
August-2012	0.38%
September-2012	0.35%
October-2012	0.34%
November-2012	0.32%

Calculation of weighted average yield does not include special purpose funds, checking accounts or bond proceeds

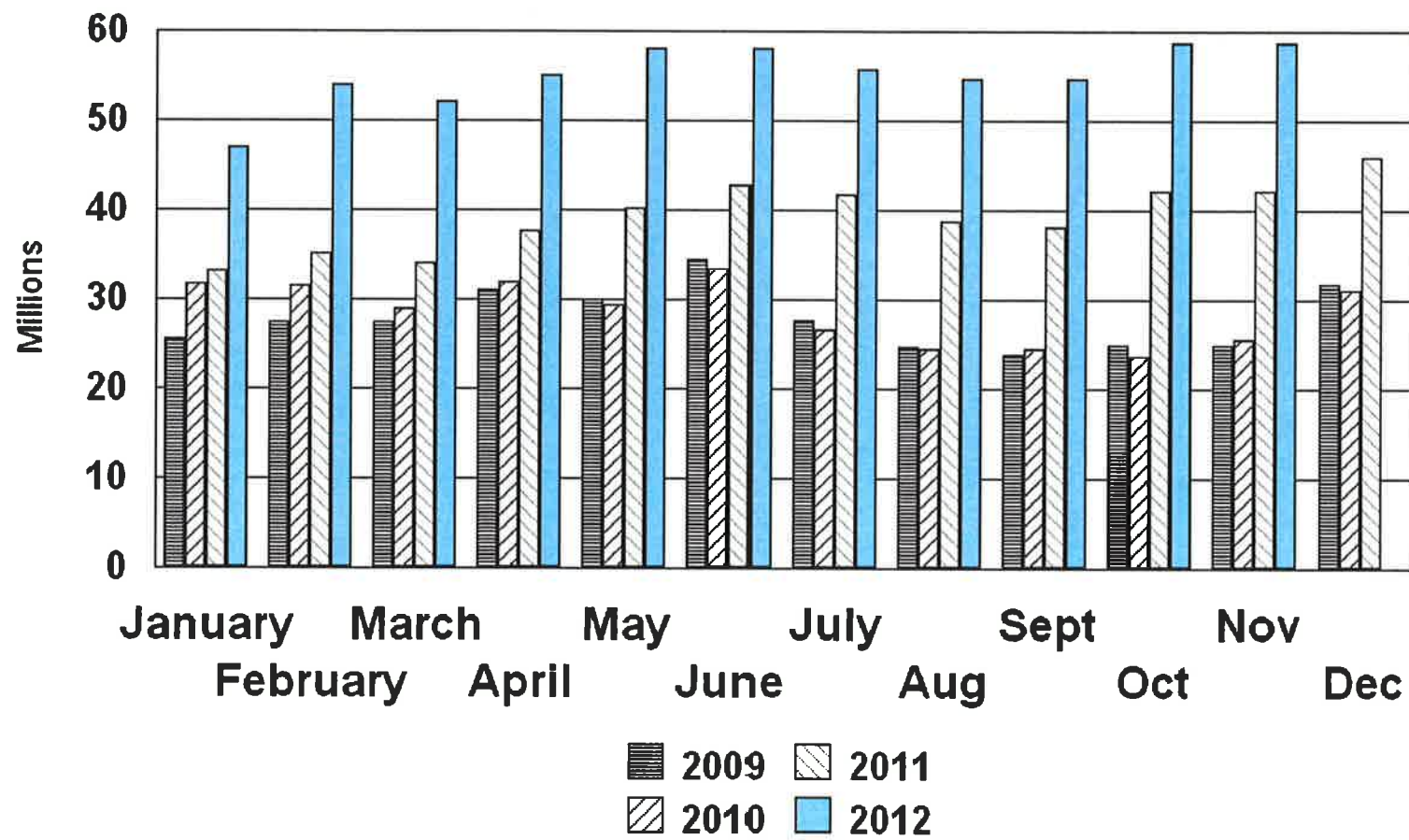


City of Colton Pooled Cash & Investments Exclusive of Funds Segregated for the Electric Utility





City of Colton Pooled Cash & Investments



**City of Colton Treasurer's Report
November 2012**

The Treasurer

PAGE 1

INVESTMENT TYPE	ISSUER	DATE OF MATURITY	PAR AMOUNT	COST	FAIR MKT VALUE	YIELD
STATE POOL						
LAIF-General, other	State Pool	Daily	\$ 48,150,771	\$ 48,150,771	\$ 48,150,771	0.32%
LAIF-Electric Reserve	State Pool	Daily	\$ 10,703,100	10,703,100	10,703,100	0.32%
			58,853,871	58,853,871	58,853,871	
TOTAL INVESTMENTS BY TREASURER			<u>\$ 58,853,871</u>	<u>\$ 58,853,871</u>	<u>\$ 58,853,871</u>	
NON INVESTMENT ACCOUNTS						
Bank of America	General acct- Note 2	Daily	\$ 3,924,385	\$ 3,924,385	\$ 3,924,385	0.25%
Bank of America	Workers Comp	Daily	76,358	76,358	76,358	N/A
Bank of America	3% Loans					
Bank of America	RDA					
Bank of America	Rancho Med	Daily	192,241	192,241	192,241	N/A
Citizens Bus. Bank	CFD 87-1	Daily	144,522	144,522	144,522	0.20%
Citizens Bus. Bank	CFD 88-1	Daily	227,761	227,761	227,761	0.20%
Citizens Bus. Bank	CFD 89-1	Daily	229,460	229,460	229,460	0.20%
Citizens Bus. Bank	CFD 89-2	Daily	57,483	57,483	57,483	0.13%
Citizens Bus. Bank	CFD 90-1	Daily	46,552	46,552	46,552	0.10%
Citizens Bus. Bank	Asset Seizure - Fed.	Daily	590,385	590,385	590,385	0.25%
Citibank	Asset Seizure - State	Daily	95,906	95,906	95,906	0.30%
Citibank	Seizure lit	Daily	25,819	25,819	25,819	0.25%
Citibank	Cash-evid	Daily	168,563	168,563	168,563	0.50%
City National Bank	Public Liability					
			\$ 5,779,435	\$ 5,779,435	\$ 5,779,435	
PETTY CASH FUNDS			<u>5,000</u>	<u>5,000</u>	<u>5,000</u>	N/A
TOTAL NON INVESTMENT ACCOUNTS			<u>\$ 5,784,435</u>	<u>\$ 5,784,435</u>	<u>\$ 5,784,435</u>	

Note 1- Fair Market Value of discount items are priced at their accreted values

Note 2-General account balance based on bank statement

**City of Colton Treasurer's Report
November 2012**

Investments under Bond Indentures

PAGE 2

TRUSTEE Bond Issue	ISSUER	DATE OF MATURITY	PAR AMOUNT	COST	FAIR MKT. VALUE	YIELD
Union Bank						
1998 Water Bonds-R	Morgan Grnty Trust	3/1/2030	\$ 702,500	\$ 702,500	\$ 702,500	5.30%
1998 Water Bonds-R	Blackrock Prov.	Daily	\$ 18,824	\$ 18,824	\$ 18,824	0.01%
1998 Water Bonds-C	Blackrock Prov.	Daily	2,226,218	2,226,218	2,226,218	0.01%
2000 Wastewater B-R	GE GIC	3/1/2025	412,658	412,658	412,658	6.15%
2012 Electric Bonds-PP	Blackrock Prov.					
2012 Electric Bonds-R	FFCB	11/27/2017	2,770,000	2,770,000	2,770,683	0.87%
2012 Electric Bonds-R	Blackrock Prov.	Daily	683	683	683	0.01%
2007A Bonds-PP	Blackrock Prov.	Daily	856,738	856,738	856,738	0.01%
CFD 89-2	LAIF	Daily	275,252	275,252	275,252	0.32%
AD 00-1	LAIF	Daily	31,318	31,318	31,318	0.32%
			<u>\$ 7,294,191</u>	<u>\$ 7,294,191</u>	<u>\$ 7,294,874</u>	

Note 2 Securities are priced by the Trustee. Guaranteed Investment Contracts are priced at par as they are not marketable securities and are putable at par.

**City of Colton Treasurer's Report
November 2012**

PAGE 4

		DATE OF	AMOUNT	COST	FAIR MKT.	YIELD
Hermosa Memorial Gardens		MATURITY			VALUE	
Citibank	Trust	Daily	\$ 468,879	\$ 468,879	\$ 468,879	0.50%
Bank of America	Endowment Care	Daily	607,301	607,301	607,301	n/a
			<u>\$ 1,076,180</u>	<u>\$ 1,076,180</u>	<u>\$ 1,076,180</u>	

**Colton Park & Rec
Foundation**

Bank of America	Checking	Daily	\$ 20,973	\$ 20,973	\$ 20,973	n/a
-----------------	----------	-------	-----------	-----------	-----------	-----